

# BGvACC Controller Software

## Quickstart Guide

### Table of Contents

1. Overview.....	1
1.1. Euroscope Setup.....	2
1.2. AudioForVatsim Setup.....	7
1.3. vATIS Setup.....	8
2. Connecting to VATSIM.....	10
2.1. Connecting as Observer.....	10

## 1. Overview

In order to start controlling with BGvACC, you will need to set up and learn how to use three pieces of software: Euroscope, AudioForVatsim, and vATIS.

- **Euroscope** is our main controller client. It is how you will see traffic on the network, see flight plans, record instructions, and communicate with other online controllers.
- **AudioForVatsim** is the voice connection to the server and the primary way to communicate with pilots. It serves the same purpose as vPilot and xPilot do for pilots.
- **vATIS** uses our profile to generate the ATIS for the airport you are staffing.

## 1.1. Euroscope Setup

Euroscope is the most complicated of the three, but most of the setup is taken care of by our navigation team in the form of sectorfiles. The following guide will run you through the steps of downloading and loading everything that is needed to observe or control.







**Step 1:** Download our recommended version, Euroscope v3.2.3 from [here](#).

**Step 2:** After downloading and running the Euroscope installer, download the LBSR LBSR-Install-Package from <http://files.aero-nav.com/LBSR>. This is our sectorfile package.

**Step 3:** Navigate to the newly created Euroscope folder within your AppData folder, either by typing %appdata% in the Windows search bar, or through File Explorer.

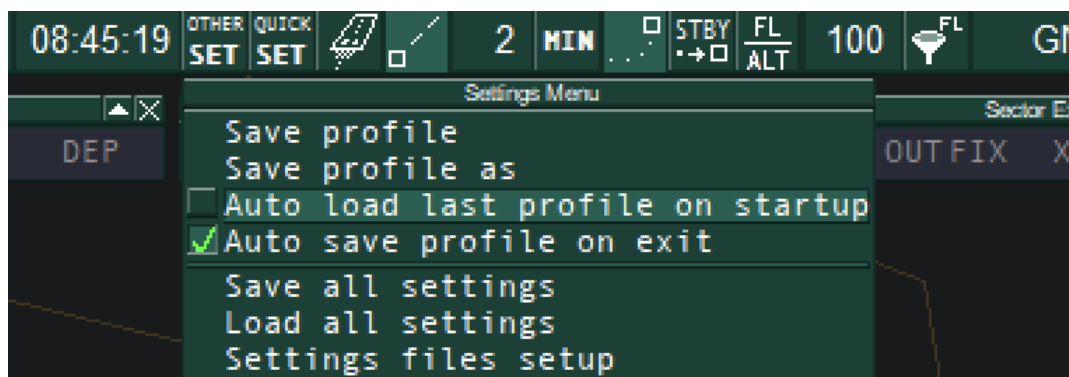
The Euroscope folder will be located at C:\Users\user\AppData\Roaming\EuroScope.

**Step 4:** Drag and drop everything from the sectorfile download into the Euroscope folder. You should now have the following files there:

Name	Date modified	Type	Size
 LBSR	12/31/2024 12:37 PM	File folder	
 aeronav_copyright	12/26/2024 8:04 PM	Text Document	4 KB
 Bulgaria - TopSky	12/26/2024 8:04 PM	PICS Rules File	4 KB
 Bulgaria	12/26/2024 8:04 PM	PICS Rules File	2 KB
 LBSR-LBSR-Package_20241226190423-241301-...	12/26/2024 8:04 PM	ESE File	209 KB
 LBSR-LBSR-Package_20241226190423-241301-...	12/26/2024 8:04 PM	Windows Script Com...	4,581 KB

**Step 5:** Launch Euroscope. If this is the first time you are opening it, it should prompt you to open a profile file. Select and open the **Bulgaria.prf** file that is located in the main Euroscope folder from earlier.

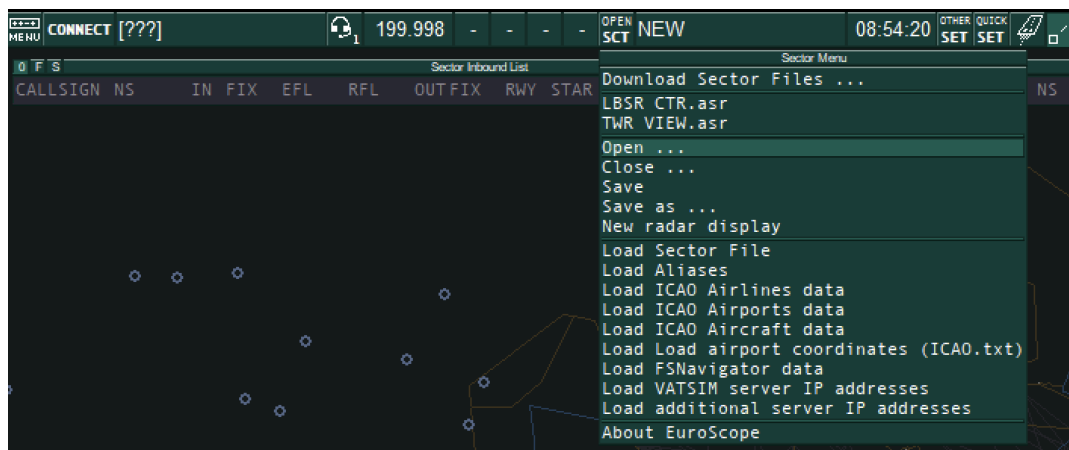
*If you are **NOT** asked to open a profile file when setting up the files for the **first time**, you will have to deselect “Auto load last profile on startup” from the Other SET button as shown below:*



**Welcome to Euroscope.** It is normal to initially feel overwhelmed by the amount of buttons and menus everywhere, however you will learn and get used to them during your training process.

There are just a few more settings that need to be changed before the setup is complete.

**Step 6:** ASR files are your views, those being Tower, Approach, and Control. To open one, click on the Open SCT button in the top left and select Open.



You will need to navigate to the **ASR folder**, located within LBSR in the Euroscope:

C:\Users\user\AppData\Roaming\EuroScope\LBSR\ASR

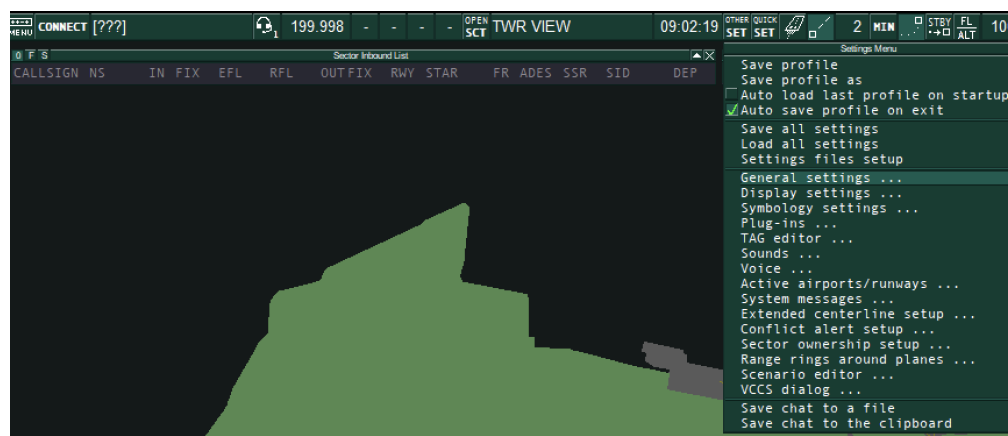
*If your AppData folder is **not** showing up, you will need to “show hidden folders” from the File Explorer options, and then click open in Euroscope again.*

From the ASR folder, select and open the file called TWR VIEW. Your screen should now show the tower view for LBSF, as shown below:

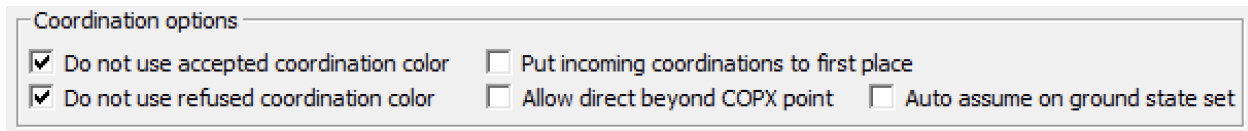


This is the main view you will be using for the majority of your training. You can also open and switch between views from the same menu.

**Step 7:** Open General settings by clicking on the Other SET button, and selecting General settings ... as shown below:



Once there, make sure that “Auto assume on ground state set” is **not** ticked:

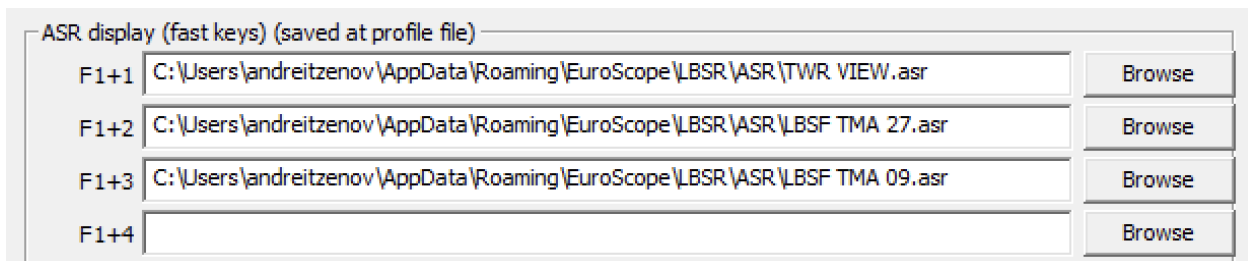


Coordination options

☒ Do not use accepted coordination color    ☐ Put incoming coordinations to first place

☒ Do not use refused coordination color    ☐ Allow direct beyond COPX point    ☐ Auto assume on ground state set

Finally, go to page 2 of the general settings and set these keybinds by clicking on browse and selecting the files shown:



ASR display (fast keys) (saved at profile file)

F1+1	C:\Users\andreitzenov\AppData\Roaming\EuroScope\LBSR\ASR\TWR VIEW.asr	Browse
F1+2	C:\Users\andreitzenov\AppData\Roaming\EuroScope\LBSR\ASR\LBSF TMA 27.asr	Browse
F1+3	C:\Users\andreitzenov\AppData\Roaming\EuroScope\LBSR\ASR\LBSF TMA 09.asr	Browse
F1+4		Browse

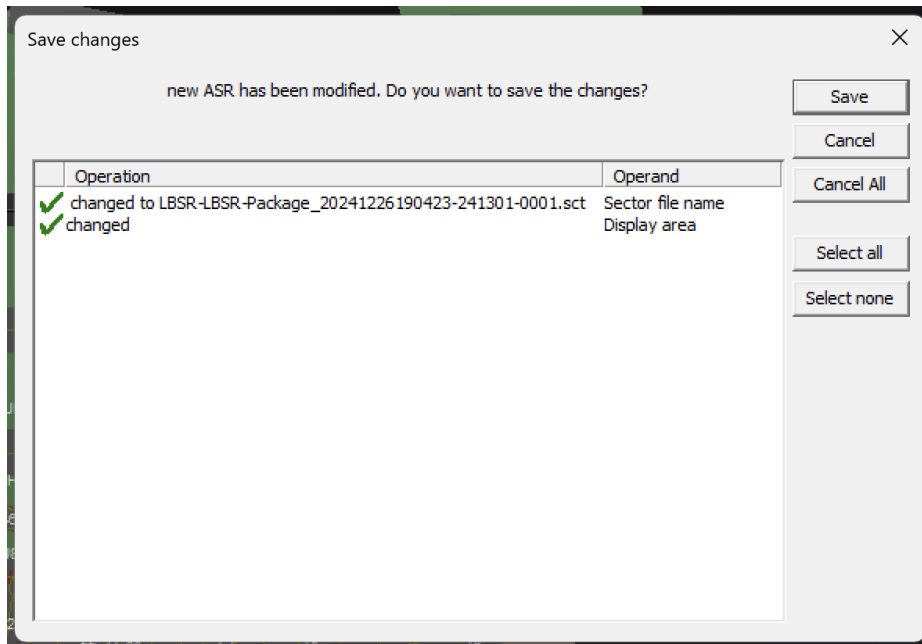
*These keybinds are only recommended as the best starting option, feel free to set different views and play around with what's useful for you.*

Click ok to save and close the general settings menu.

### Step 8: EXTREMELY IMPORTANT

This step is extremely important, as it will save all of the changes we have made above and ensure you do not have to redo them the next time you open Euroscope. Please follow the instructions **carefully** and **do not skip ahead**.

1. Click the X button in the top right to begin closing Euroscope
2. Click Yes on the popup asking if you are sure to exit.
3. You will now see a series of popups like the one below, asking if you want to save all of the changes we have made:



4. Click cancel **ONLY** the first one, and save on **ALL** subsequent ones!
5. You are now free to open Euroscope again, and all of the changes will be saved.

*If something goes wrong and you don't save your changes properly, you should go back and repeat steps 7 and 8.*

*Note: On each subsequent closing of Euroscope it will ask you if you want to save changes again, this is not necessary after the initial setup unless you have deliberately made a change you want to keep.*

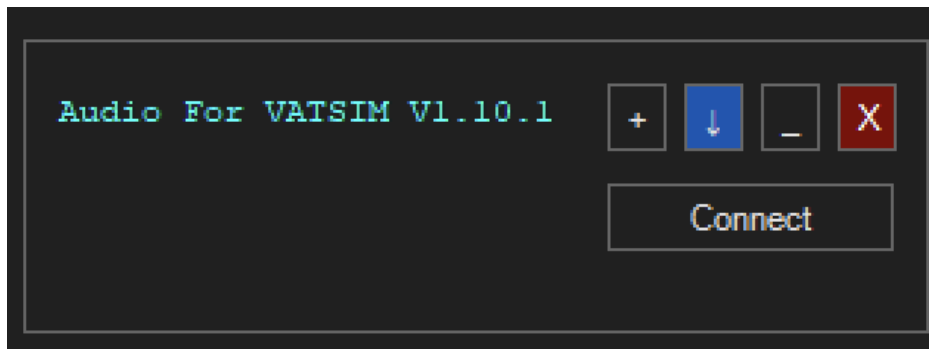
## 1.2. AudioForVatsim Setup

AudioForVatsim facilitates the audio connection between you and the network while you are connected via Euroscope. There are no region-specific files needed for this, only the application itself.

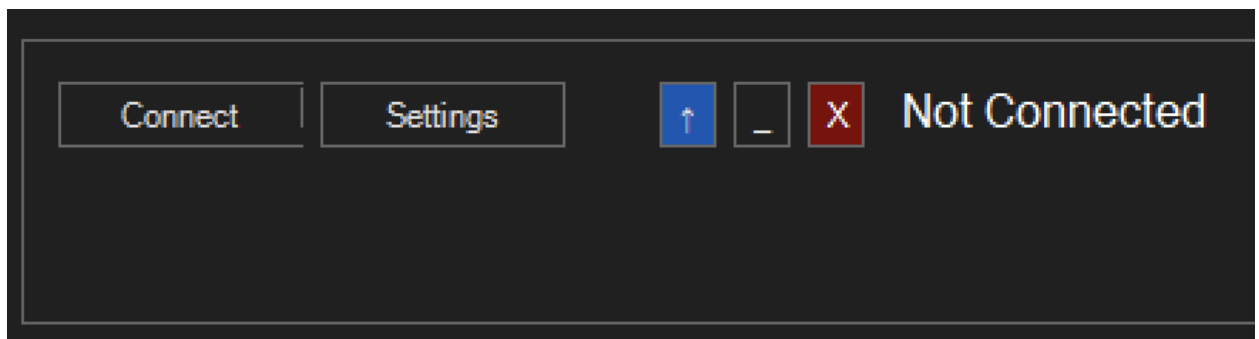
**Step 1:** Download the latest version of AudioForVatsim from [here](#) or [audio.vatsim.net](http://audio.vatsim.net).

**Step 2:** Run the installer and open the application.

*Note: AudioForVatsim has two views, full and minimized. The minimized view is useful when controlling as it hides information that is not needed and takes up space, however if you need to access the settings or make other changes you will need to open the full view. To switch between them, click either this arrow:*



Or this one:



**Step 3:** Open the settings, and fill in your user details, select your microphone and headset devices, and set your push to talk button. If needed, increase or decrease your mic volume so that the bar goes to the middle of the green band when speaking normally. When done, click apply and the setup is complete.

The screenshot shows the 'AFV Settings' window with the following sections:

- User Details:** VATSIM CID: 1604267, VATSIM Password: [redacted]
- Audio Settings:**
  - Microphone Device: Microphone (High Definition Audio Device)
  - Headset Device: Speakers (High Definition Audio Device)
  - Optional Speaker Device: [empty]
  - Output Volume: [slider at 0]
  - Mic Volume: [slider at 30]
  - A volume bar with green, yellow, and red segments. A blue arrow points to the green segment.
  - Important:** Adjust the mic volume slider so that the peak level indicator remains in the green band while speaking normally.
  - ☐ Disable Realistic ATC Audio Effects (Not Recommended)
  - ☐ Squelch on HF
- PTT Settings:**
  - Buttons: Set New PTT Key or Button, Clear Current PTT Assignment
  - Current PTT Assignment: **Keyboard: Oem8**
- Simulator Settings (For None ATC):**
  - X-Plane IP Address: 127.0.0.1
  - Single PC
  - ☐ Use FSUIPC With FS9/FSX/P3D
- Stream Deck:**
  - ☐ Enable Stream Deck
- Buttons:** OK, Apply, Cancel

## 1.3. vATIS Setup

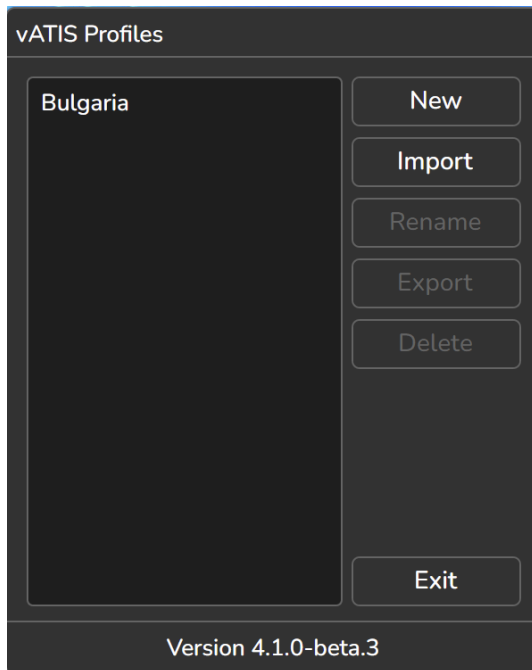
vATIS is the program that generates an ATIS connection for the airport you are controlling. It is only used when actively online to control, and not when connecting as an observer.

**Step 1:** Download the latest version of vATIS from the [official website](#).

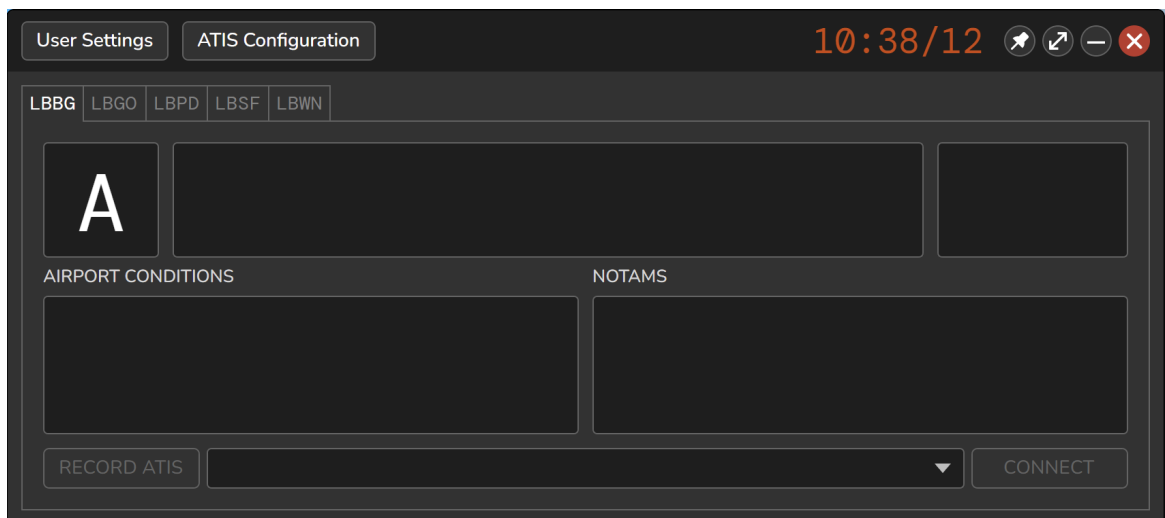
**Step 2:** Download our vATIS profile from our [website](#).



**Step 3:** Once you open the application, you will see the profiles screen. Select Import, and open the Bulgaria vATIS profile that you downloaded in step 2. Once that has been imported, it should look like this:



**Step 4:** Double click Bulgaria to open the profile. You will now see this:



As with all of the other applications, click User Settings and fill in your real name, VATSIM CID and password, and rating.

**Step 5:** vATIS is now set up, you will not use it any more until further into your training so you can close it until then.

*Note: Connecting an ATIS will be explained in more detail by your mentor.*

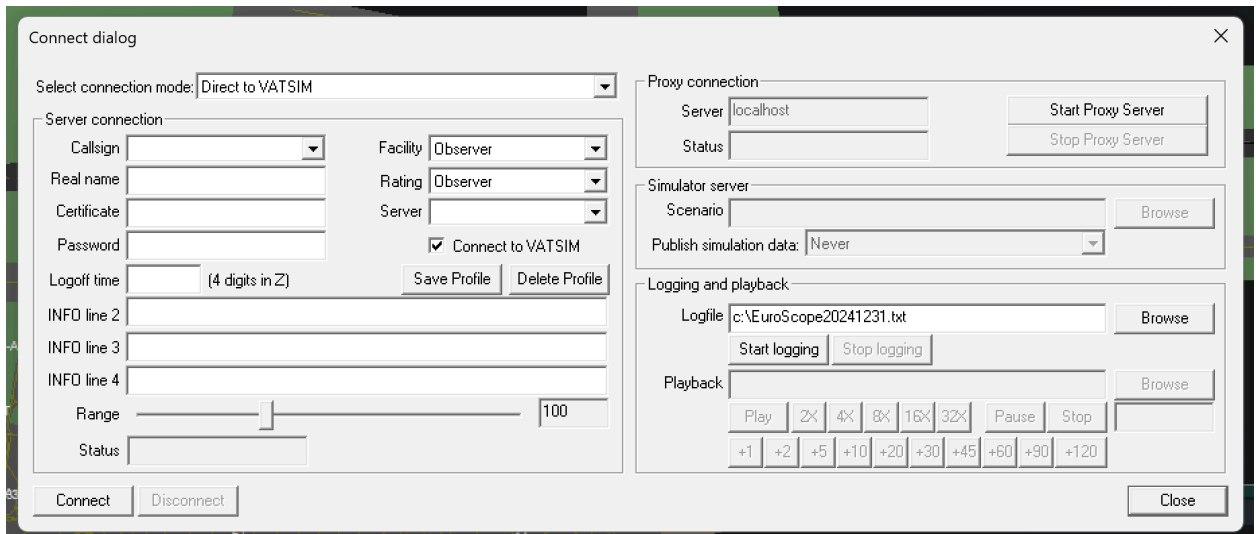
## 2. Connecting to VATSIM

There are two ways to connect to VATSIM using Euroscope. Either as an observer, or as a controller. Anyone can connect as an observer to watch and listen to other online controllers. However, to connect as a controller you will have to go through training and earn your controller rating.

This guide will walk you through connecting as an observer, while your mentor will explain how to connect as a controller when you get to that stage in the training process.

### 2.1. Connecting as Observer

1. Click the CONNECT button in the top left corner of Euroscope to bring up the connect dialog.
2. This is what it looks like:



You will need to fill in the following details:

- Callsign: Your initials\_OBS, for example AT\_OBS
- Real name: Your real name (in accordance to VATSIM policies)
- Certificate: This is your VATSIM CID, for example 1604267
- Password: Your VATSIM password

Then from the dropdown menus to the right of the above fields, you need to select:

- Facility: Make sure it is on Observer
- Rating: Your current VATSIM ATC rating, if you have not been through training then this will be Observer as well
- Server: Select AUTOMATIC

3. The connection dialog should now look something like this:

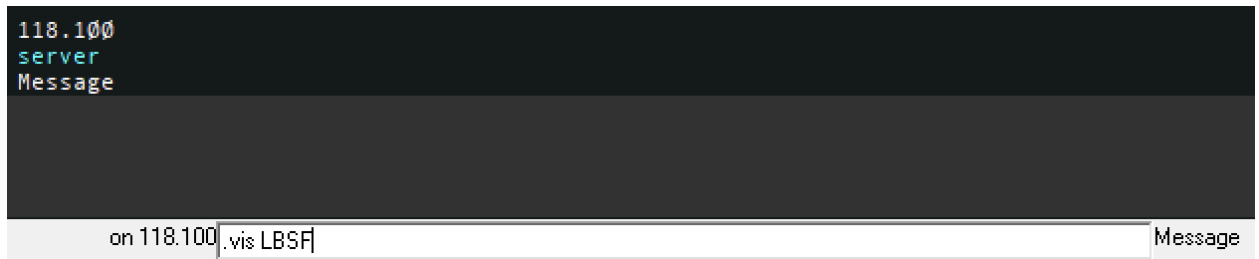
4. Now, click the Connect button in the bottom left corner to connect to the network.

5. Another menu will appear, prompting you to select voice communications. This is basically asking you which position/frequency you want to listen to. In most cases, this will be Sofia Tower (LBSF\_TWR), so select it as shown by ticking the Prim box:

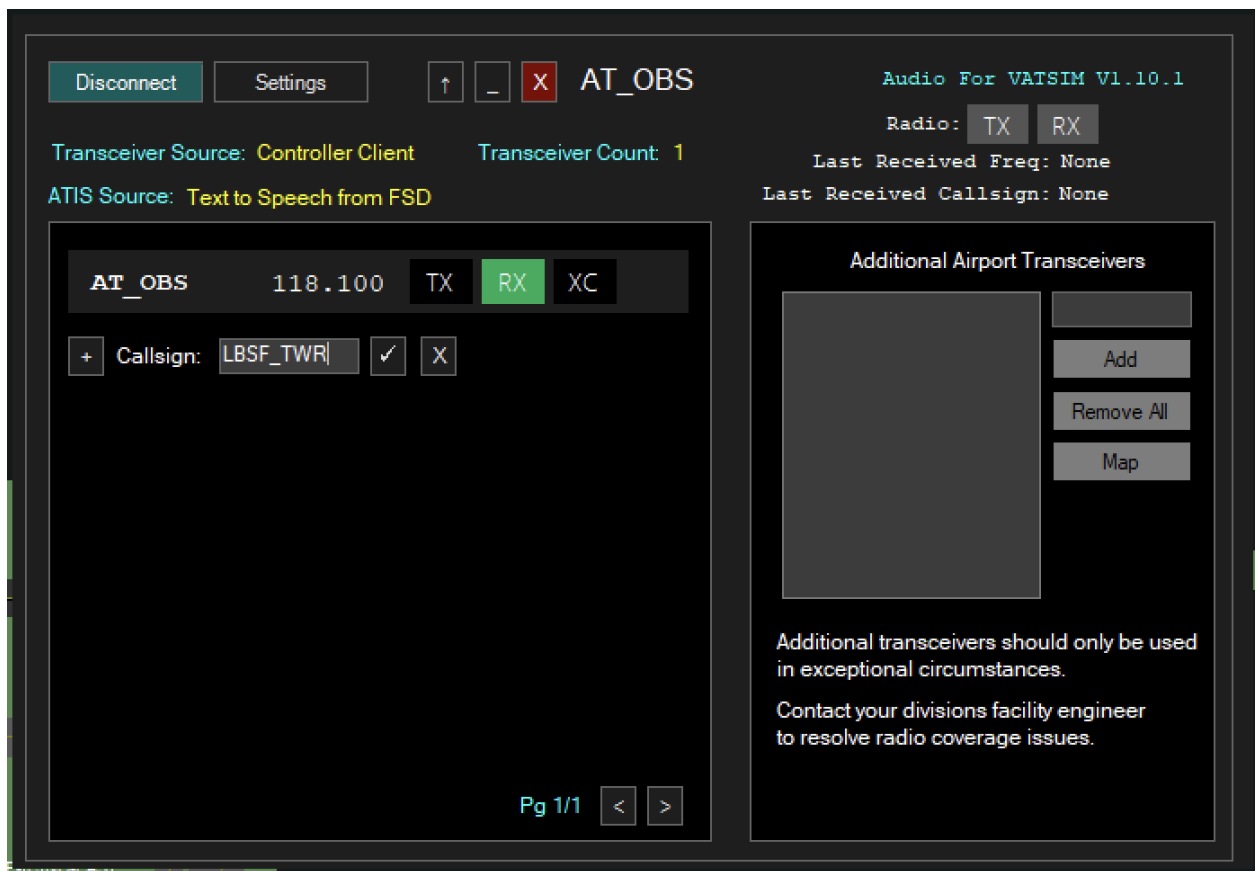
Name	Frequency	Prim	RCV TXT	XMT TXT
LBBG_APP Burgas Approach	125.100	<input type="checkbox"/>	<input type="checkbox"/>	<input type="checkbox"/>
LBBG_ATIS	126.980	<input type="checkbox"/>	<input type="checkbox"/>	<input type="checkbox"/>
LBBG_F_APP Burgas Director	119.650	<input type="checkbox"/>	<input type="checkbox"/>	<input type="checkbox"/>
LBBG_TWR Burgas Tower	118.000	<input type="checkbox"/>	<input type="checkbox"/>	<input type="checkbox"/>
LBGO_ATIS	127.130	<input type="checkbox"/>	<input type="checkbox"/>	<input type="checkbox"/>
LBGO_TWR Gorna Tower	133.500	<input type="checkbox"/>	<input type="checkbox"/>	<input type="checkbox"/>
LBDP_ATIS	127.205	<input type="checkbox"/>	<input type="checkbox"/>	<input type="checkbox"/>
LBDP_TWR Plovdiv Tower	133.600	<input type="checkbox"/>	<input type="checkbox"/>	<input type="checkbox"/>
LBSF_APP Sofia Radar	123.700	<input type="checkbox"/>	<input type="checkbox"/>	<input type="checkbox"/>
LBSF_ATIS	126.680	<input type="checkbox"/>	<input type="checkbox"/>	<input type="checkbox"/>
LBSF_F_APP Sofia Director	129.900	<input type="checkbox"/>	<input type="checkbox"/>	<input type="checkbox"/>
<b>LBSF_TWR Sofia Tower</b>	<b>118.100</b>	<input checked="" type="checkbox"/>	<b>TXT</b>	<b>TXT</b>
LBSR_B_CTR Sofia Control	132.950	<input type="checkbox"/>	<input type="checkbox"/>	<input type="checkbox"/>

Click close.

6. The chat is located at the bottom of your screen. It also serves as a command line, allowing you to run commands starting with a dot. Type in “.vis LBSF” and press enter:

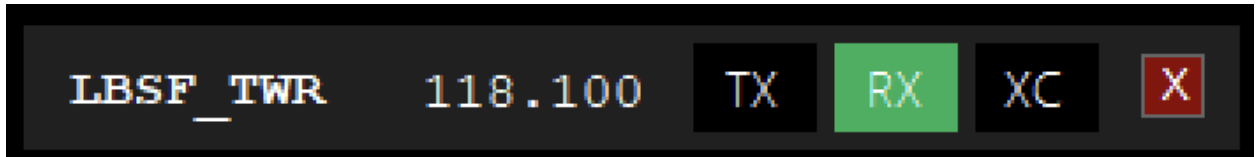


7. Finally, open AudioForVatsim and click connect. Then, click the plus button to add a new position to listen to:



Type in the callsign LBSF\_TWR, and click the check. The frequency will not be in the database, so you will have to manually enter its frequency of 118.100 and press ok.

8. Lastly, click the RX button to select it and listen to the frequency. TX and XC should remain unselected:



You can now click the up arrow to minimize the AudioForVatsim window and drag it out of the way to a corner of your screen.

9. That is all you need to start listening to ATC at LBSF, to disconnect just press the disconnect buttons on both the AudioForVatsim window and the Euroscope connection dialog.

*Note: After each online session, Euroscope will ask you if you would like to save the automatically logged session data. This is not necessary and you should select No.*

